

Gloncoduo

A solução para
cães e gatos com
processos
oncológicos

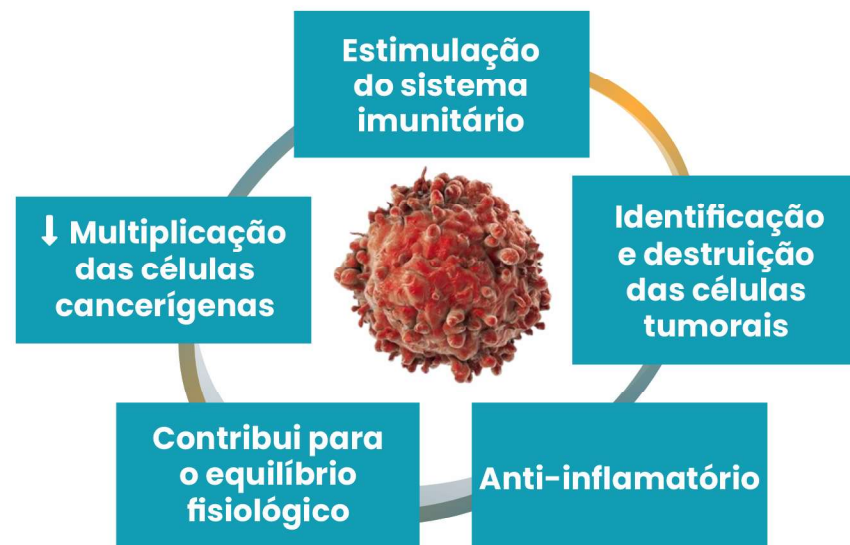


BENZOQUINONAS

EPA

DHA

ÓLEO DE
SEMENTES
DE CÂNHAMO



Cães:

1 comprimido + 1 cápsula por cada 15Kg /dia

Gatos:

½ comprimido /dia + 1 cápsula em dias alternados

Caixa com 30 comprimidos e 30 cápsulas moles

Recomenda-se duplicar a dose nas primeiras 6 semanas ou durante a administração simultânea de outras terapias como quimio ou radioterapia.

É recomendado um intervalo de 2h antes e depois da administração de outros produtos.

O Gloncoduo é um alimento complementar semelhante ao suplemento nutricional utilizado em medicina humana, Avemar, do qual existem numerosas publicações científicas sobre o seu uso como apoio no tratamento de diversas patologias oncológicas e imunomediadas.



Benzoquinonas

As benzoquinonas atuam de forma positiva em processos oncológicos e imunomediados, conseguindo efeitos benéficos na inflamação e na estimulação do sistema imunitário.

📌 **Aumentam a eficácia do sistema imunitário.** As células estranhas revestem-se de uma molécula MHC-I (escudo natural contra NK-Natural Killer) ludibriando o sistema imunitário.

As benzoquinonas conseguem:

- 🔗 Remover este “escudo”, aumentando a identificação pelo sistema imunitário
- 🔗 Aumentar a expressão da molécula intercelular ICAM-1, promovendo a infiltração das Natural Killers para as células tumorais

📌 **Inibem a captação de glicose** nas células neoplásicas

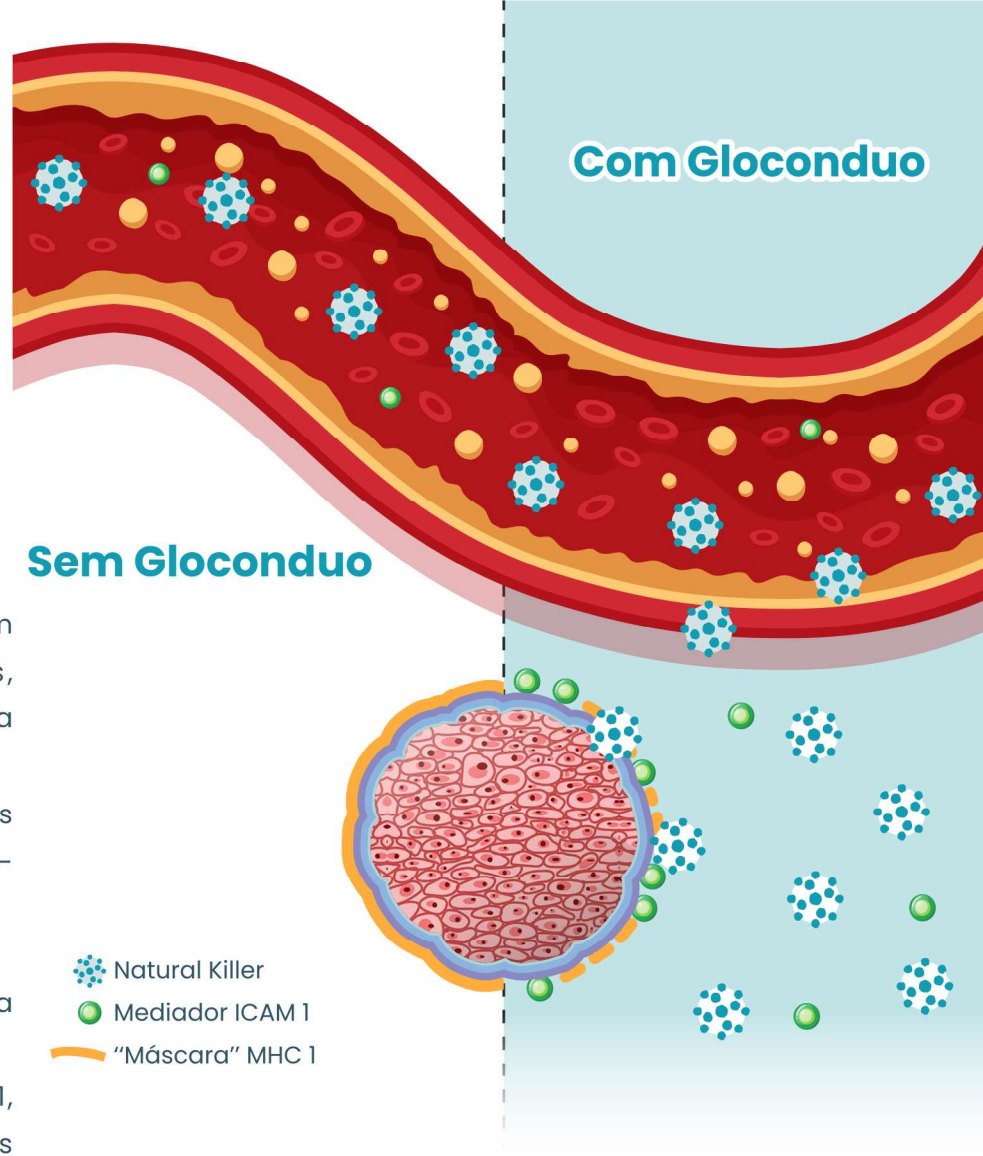
📌 **Diminuem a multiplicação das células neoplásicas**

📌 **Contribuem para o equilíbrio fisiológico** celular/humoral

📌 **Aumentam a ação dos macrófagos**

📌 **Efeito anti-inflamatório**

O óleo de sementes de cânhamo, juntamente com os EPA e DHA, potenciam a absorção e ação das benzoquinonas.





GLONEFRO

Alimento complementar composto para cães e gatos com alterações renais.

Composição

Carbonato de Lantânio, Quitosano, *Lactobacillus helveticus* inativado, *Lactococcus/bacillus paracasei* inativado, *Enterococcus faecium*, Vitamina B12, Ácido fólico, Vitamina D.

Indicações

Cães e gatos com alterações renais para melhoria nos níveis séricos de uréia, creatinina e fósforo, prevenção da evolução da doença renal e melhoria da qualidade e esperança média de vida.

Posologia

0-4kg - 1 cápsula/dia; 4-10kg - 2 cápsulas/dia (dividido em 2 tomas); > 10kg - 3 cápsulas/dia (dividido em 2 tomas).

Apresentação

Gloprofro 30 cápsulas duras de 465g.

GLOLIVER

Alimento complementar composto para suporte nutricional da função hepática e nas situações de stress oxidativo em cães e gatos.

Composição

Levedura de cerveja inativada (*Saccharomyces cerevisiae*), Silicolina® (silibina) + complexo fosfatidil-colina), Melofee® (fonte de Superóxido dismutase), Cavacurmin® (complexo de curcumina), DL-metionina, Zinco, Selénio, Taurina, Vitamina E, Vitamina C.

Indicações

Suporte nutricional da função hepática e nas situações de stress oxidativo em cães e gatos.

Posologia

gloLiver Raças pequenas e gatos: 0-5kg: ½ comprimido/dia; 5-10kg: 1 comprimido/dia

GloLiver Raças médias e grandes: 10-20kg: ½ comprimido/dia; 20-40kg: 1 comprimido/dia; >40kg: 2 comprimidos/dia

Usar com precaução em animais com doença hepática muito severa.

Apresentação

GloLiver Raças pequenas e gatos: 30 comprimidos de 500 mg.
GloLiver Raças médias e grandes: 30 comprimidos de 1500 mg.

GLONCODUO

Alimento complementar composto para apoio em processos oncológicos e modulação do sistema imunitário.

Composição

Comprimidos: extrato de gérmen de trigo.

Cápsulas: Óleo de peixe (EPA e DHA), Óleo de sementes de cânhamo.

Indicações

Cães e gatos com doença oncológica (como abordagem única ou como complemento a outras medicações/tratamentos) ou processos imunomodulados.

Posologia

Cães: 1 comprimido + 1 cápsula por cada 15Kg.
recomenda-se duplicar a dose nas primeiras 6 semanas ou durante a administração simultânea de outras terapias como quimio ou radioterapia.
Gatos: 1 comprimido + 1 cápsula por dia durante 6 semanas ou durante a administração simultânea de outras terapias oncológicas como quimio ou radioterapia.

Após esse período a dose pode ser reduzida para ½ cp por dia e 1 cápsula em dias alternados.

Recomendações

Os comprimidos podem ser administrados diretamente na boca ou partidos e misturados com a comida. O conteúdo da cápsula também pode ser colocado na comida, se necessário.

A dose pode ser duplicada em caso de necessidade.

É recomendado um intervalo de 2h antes e depois da administração relativamente a outros produtos/fármacos, para evitar a possibilidade de diminuição da absorção.

Apresentação

Gloncoduo: 30 LípidoCaps de 1713 mg + 30 Comprimidos de 1500 mg.

GLOENTERIC

Alimento complementar composto para cães e gatos que contem microrganismos essenciais, adsorventes e outras substâncias que auxiliam a função digestiva normal.

Composição

Enterococcus faecium, Bentonite, Pectina, Fruto-oligosacáridos (FOS), Mananoligosacáridos (MOS), FlowSymbio™ (*Lactisacibacillus paracasei* inativado e *Lactobacillus helveticus* inativado).

Indicações

Diarreias agudas e crónicas de qualquer origem. Qualquer situação que requiera reequilíbrio da microflora intestinal.

Posologia

1 cápsula / animal / dia

Apresentação

Gloenteric: 4 cápsulas duras de 503 mg.

GLOJOINT

Alimento complementar composto para a proteção articular de cães e gatos.

Composição

Cloridrato de Glucosamina, Sulfato de Condroitina, Midoal® (combinação patenteada de extracto de *Zingiber officinale* e *Acemella oleracea*), MSM, Colágeno Tipo II, Cavacurmin® (complexo de curcumina), Harpago, Boswelvia, Manganês, Zinco, Óleo de peixe (EPA e DHA), Vitamina E, Vitamina C.

Indicações

Cães e gatos com dor ou alterações articulares. Antes e depois de cirurgias ortopédicas. Reforço articular em cachorros de raças grandes e gigantes.

Posologia

PASTA: Gatos e cães até 10kg: 1ml por dia

CUMPRIMULUS: 0-10kg: ½ comprimido por dia

10-30kg: 1 comprimido por dia

>30kg: 2 comprimidos por dia

Apresentação

GloJoint Raças pequenas e gatos: Pasta oral de 30 ml.

GloJoint Raças médias e grandes: 30 comprimidos de 1500 mg.

Referências bibliográficas GLOPETY+

Glojoint: 1 Rondanelli M, Riva A, Allegrini P, Fallaiva M, Naso M, Peroni G, Nichetti M, Gaspari C, Spadaccini D, Iannello G, Infantino V, Fazio T, Bernardinelli L, Perna S. The Use of a New Food-Grade Lecithin Formulation of Highly Standardized Ginger (*Zingiber officinale*) and *Acemella oleracea* Extracts for the Treatment of Pain and Inflammation in a Group of Subjects with Moderate Knee Osteoarthritis. In: *Journal of Pain Research*; 2020. p. 761-770. Published online 2020 Apr 21. DOI: 10.1177/1073.5214488.2
2 Pol P, Carnevale S, Scocco A, Davallo FL, Busi S, Meneghini M, Petrangolini G, Riva A. Promising Health Benefits of Adjuvant *Acemella* and *Zingiber* Extracts Combined with Coenzyme Q10 Phytosomes Supplementation in Chronic Pain Treated with Medical Cannabis: A Prospective and Open-Label Clinical Study. In: *Evidence-based Complementary and Alternative Medicine*; 2022. 2022: 7099161. Published online 2022 Jun 13. DOI: 10.1155/2022/7099161
Gloncoduo: 1 Judson PL, Al Sawah E, Marchion DC, Xiang Y, Blicau E, Zghelb NB, Chan HS, Sticklez XB, Hakami A, Wernham RM, Apte SM, Gonczarzewski Bosquet J, Chen DT, Lancaster JM. Characterizing the efficacy of fermented wheat germ extract against ovarian cancer and defining the genomic basis of its activity. In: *International Journal of Gynecological Cancer*; Jul 22 (10); 2012. p. 900-907. DOI: 10.1097/GYB.0b313e318265909a. 2 Mueller T, Voigt W. Fermented wheat germ extract - nutritional supplement or anticancer drug? In: *Nutrition Journal*; Sep 5 (10); 2011. p. 89. DOI: 10.1186/1475-2875-10-89. 3 Mueller T, Jordan K, Voigt W. Promising cytotoxic activity profile of fermented wheat germ extract (Aveamar) in human cancer cell lines. In: *Journal of Experimental & Clinical Cancer Research*; Apr 16 (30); 2011. p. 42. DOI: 10.1186/1756-9966-30-42. 4 Teles A, Hegedus M, Chae CH, Vekey K, Aveamar (wheat germ extract) in cancer prevention and treatment. In: *Nutrition and Cancer*; 61 (6); 2009. p. 891-899. DOI: 10.1080/01635580903285114. 5 Iyer A, Brown L. Fermented wheat germ extract (Aveamar) in the treatment of cardiac remodeling and metabolic symptoms in rats. In: *Evidence-based Complementary and Alternative Medicine*; Epub 2011 Jan 4; 2011. p. 508957. DOI: 10.1039/eca011093h. 6 Saiko P, Ozsar-Kozma M, Graser G, Lackner A, Grusch M, Madlener S, Krupitza G, Jaeger W, Hidvegi M, Agarwal RP, Fritzer-Szekeress M, Szekeress T, Aveamar, a nontoxic fermented wheat germ extract, attenuates the growth of sensitive and 5-FUrd/Ara-C cross-resistant H9 human lymphoma cells through induction of apoptosis. In: *Oncology Reports*; Mar; 21 (3); 2009. p. 787-791. DOI: 10.1586/1073.5214488.2
7 Teles A, Resetar A, Blassó G, Falgay O, Szende B, Ehrenfeld M, Shoenfeld Y, Hidvegi M. Effect of Aveamar - a fermented wheat germ extract - on rheumatoid arthritis. Preliminary data. In: *Clinical and experimental rheumatology*; May - Jun; 24 (3); 2006. p.325-328. 14- Boros LG, Nichelatti M, Shoenfeld Y. Fermented wheat germ extract (Aveamar) in the treatment of cancer and autoimmune diseases. In: *Annals of the New York Academy of Sciences*; Jun; 1051; 2005. p.529-542. DOI: 10.1196/annals.1303.19. 15- Teles A, Kiss-Ióti L, Nagy I, Gwamstrem EL, Kuszt, Poigai J, Resetar A, Lowerik, Synergistic effect of aveamar on proinflammatory cytokine production and kas-mediated cell activation. In: *Annals of the New York Academy of Sciences*; Jun; 1051; 2005. p.510-520. DOI: 10.1196/annals.1303.19. 16- Imer L, Madlener S, Horvath Z, Saiko P, Losert A, Herbauer, Grusch M, Krupitza G, Jaeger W, Hidvegi M, Madlener S, Szekeress T, Aveamar, a nontoxic fermented wheat germ extract, induces apoptosis and inhibits ribonucleotide reductase in human HL-60 promyelocytic leukemia cells. In: *Cancer Letters*; Jun 8; 250 (2); 2007. p.323-328. DOI: 10.1016/j.canlet.2006.10.018. 13- Bólint G, Apáthy A, Gádi M, Teles A, Resetar A, Blassó G, Falgay O, Szende B, Paksy A, Ehrenfeld M, Shoenfeld Y, Hidvegi M. Effect of Aveamar - a fermented wheat germ extract - on rheumatoid arthritis. Preliminary data. In: *Clinical and experimental rheumatology*; May - Jun; 24 (3); 2006. p.325-328. 14- Boros LG, Nichelatti M, Shoenfeld Y. Fermented wheat germ extract (Aveamar) in the treatment of cancer and autoimmune diseases. In: *Annals of the New York Academy of Sciences*; Jun; 1051; 2005. p.529-542. DOI: 10.1196/annals.1303.19. 15- Teles A, Kiss-Ióti L, Nagy I, Gwamstrem EL, Kuszt, Poigai J, Resetar A, Lowerik, Synergistic effect of aveamar on proinflammatory cytokine production and kas-mediated cell activation. In: *Annals of the New York Academy of Sciences*; Jun; 1051; 2005. p.510-520. DOI: 10.1196/annals.1303.19. 16- Imer L, Madlener S, Horvath Z, Saiko P, Losert A, Herbauer, Grusch M, Krupitza G, Jaeger W, Hidvegi M, Madlener S, Szekeress T, Aveamar, a nontoxic fermented wheat germ extract, induces apoptosis and inhibits ribonucleotide reductase in human HL-60 promyelocytic leukemia cells. In: *Cancer Letters*; Jun 8; 250 (2); 2007. p.323-328. DOI: 10.1016/j.canlet.2006.10.018. 13- Bólint G, Apáthy A, Gádi M, Teles A, Resetar A, Blassó G, Falgay O, Szende B, Paksy A, Ehrenfeld M, Shoenfeld Y, Hidvegi M. Effect of Aveamar - a fermented wheat germ extract - on rheumatoid arthritis. Preliminary data. In: *Clinical and experimental rheumatology*; May - Jun; 24 (3); 2006. p.325-328. 14- Boros LG, Nichelatti M, Shoenfeld Y. Fermented wheat germ extract (Aveamar) in the treatment of cancer and autoimmune diseases. In: *Annals of the New York Academy of Sciences*; Jun; 1051; 2005. p.529-542. DOI: 10.1196/annals.1303.19. 15- Teles A, Kiss-Ióti L, Nagy I, Gwamstrem EL, Kuszt, Poigai J, Resetar A, Lowerik, Synergistic effect of aveamar on proinflammatory cytokine production and kas-mediated cell activation. In: *Annals of the New York Academy of Sciences*; Jun; 1051; 2005. p.510-520. DOI: 10.1196/annals.1303.19. 16- Imer L, Madlener S, Horvath Z, Saiko P, Losert A, Herbauer, Grusch M, Krupitza G, Jaeger W, Hidvegi M, Madlener S, Szekeress T, Aveamar, a nontoxic fermented wheat germ extract, induces apoptosis and inhibits ribonucleotide reductase in human HL-60 promyelocytic leukemia cells. In: *Cancer Letters*; Jun 8; 250 (2); 2007. p.323-328. DOI: 10.1016/j.canlet.2006.10.018. 13- Bólint G, Apáthy A, Gádi M, Teles A, Resetar A, Blassó G, Falgay O, Szende B, Paksy A, Ehrenfeld M, Shoenfeld Y, Hidvegi M. Effect of Aveamar - a fermented wheat germ extract - on rheumatoid arthritis. Preliminary data. In: *Clinical and experimental rheumatology*; May - Jun; 24 (3); 2006. p.325-328. 14- Boros LG, Nichelatti M, Shoenfeld Y. Fermented wheat germ extract (Aveamar) in the treatment of cancer and autoimmune diseases. In: *Annals of the New York Academy of Sciences*; Jun; 1051; 2005. p.529-542. DOI: 10.1196/annals.1303.19. 15- Teles A, Kiss-Ióti L, Nagy I, Gwamstrem EL, Kuszt, Poigai J, Resetar A, Lowerik, Synergistic effect of aveamar on proinflammatory cytokine production and kas-mediated cell activation. In: *Annals of the New York Academy of Sciences*; Jun; 1051; 2005. p.510-520. DOI: 10.1196/annals.1303.19. 16- Imer L, Madlener S, Horvath Z, Saiko P, Losert A, Herbauer, Grusch M, Krupitza G, Jaeger W, Hidvegi M, Madlener S, Szekeress T, Aveamar, a nontoxic fermented wheat germ extract, induces apoptosis and inhibits ribonucleotide reductase in human HL-60 promyelocytic leukemia cells. In: *Cancer Letters*; Jun 8; 250 (2); 2007. p.323-328. DOI: 10.1016/j.canlet.2006.10.018. 13- Bólint G, Apáthy A, Gádi M, Teles A, Resetar A, Blassó G, Falgay O, Szende B, Paksy A, Ehrenfeld M, Shoenfeld Y, Hidvegi M. Effect of Aveamar - a fermented wheat germ extract - on rheumatoid arthritis. Preliminary data. In: *Clinical and experimental rheumatology*; May - Jun; 24 (3); 2006. p.325-328. 14- Boros LG, Nichelatti M, Shoenfeld Y. Fermented wheat germ extract (Aveamar) in the treatment of cancer and autoimmune diseases. In: *Annals of the New York Academy of Sciences*; Jun; 1051; 2005. p.529-542. DOI: 10.1196/annals.1303.19. 15- Teles A, Kiss-Ióti L, Nagy I, Gwamstrem EL, Kuszt, Poigai J, Resetar A, Lowerik, Synergistic effect of aveamar on proinflammatory cytokine production and kas-mediated cell activation. In: *Annals of the New York Academy of Sciences*; Jun; 1051; 2005. p.510-520. DOI: 10.1196/annals.1303.19. 16- Imer L, Madlener S, Horvath Z, Saiko P, Losert A, Herbauer, Grusch M, Krupitza G, Jaeger W, Hidvegi M, Madlener S, Szekeress T, Aveamar, a nontoxic fermented wheat germ extract, induces apoptosis and inhibits ribonucleotide reductase in human HL-60 promyelocytic leukemia cells. In: *Cancer Letters*; Jun 8; 250 (2); 2007. p.323-328. DOI: 10.1016/j.canlet.2006.10.018. 13- Bólint G, Apáthy A, Gádi M, Teles A, Resetar A, Blassó G, Falgay O, Szende B, Paksy A, Ehrenfeld M, Shoenfeld Y, Hidvegi M. Effect of Aveamar - a fermented wheat germ extract - on rheumatoid arthritis. Preliminary data. In: *Clinical and experimental rheumatology*; May - Jun; 24 (3); 2006. p.325-328. 14- Boros LG, Nichelatti M, Shoenfeld Y. Fermented wheat germ extract (Aveamar) in the treatment of cancer and autoimmune diseases. In: *Annals of the New York Academy of Sciences*; Jun; 1051; 2005. p.529-542. DOI: 10.1196/annals.1303.19. 15- Teles A, Kiss-Ióti L, Nagy I, Gwamstrem EL, Kuszt, Poigai J, Resetar A, Lowerik, Synergistic effect of aveamar on proinflammatory cytokine production and kas-mediated cell activation. In: *Annals of the New York Academy of Sciences*; Jun; 1051; 2005. p.510-520. DOI: 10.1196/annals.1303.19. 16- Imer L, Madlener S, Horvath Z, Saiko P, Losert A, Herbauer, Grusch M, Krupitza G, Jaeger W, Hidvegi M, Madlener S, Szekeress T, Aveamar, a nontoxic fermented wheat germ extract, induces apoptosis and inhibits ribonucleotide reductase in human HL-60 promyelocytic leukemia cells. In: *Cancer Letters*; Jun 8; 250 (2); 2007. p.323-328. DOI: 10.1016/j.canlet.2006.10.018. 13- Bólint G, Apáthy A, Gádi M, Teles A, Resetar A, Blassó G, Falgay O, Szende B, Paksy A, Ehrenfeld M, Shoenfeld Y, Hidvegi M. Effect of Aveamar - a fermented wheat germ extract - on rheumatoid arthritis. Preliminary data. In: *Clinical and experimental rheumatology*; May - Jun; 24 (3); 2006. p.325-328. 14- Boros LG, Nichelatti M, Shoenfeld Y. Fermented wheat germ extract (Aveamar) in the treatment of cancer and autoimmune diseases. In: *Annals of the New York Academy of Sciences*; Jun; 1051; 2005. p.529-542. DOI: 10.1196/annals.1303.19. 15- Teles A, Kiss-Ióti L, Nagy I, Gwamstrem EL, Kuszt, Poigai J, Resetar A, Lowerik, Synergistic effect of aveamar on proinflammatory cytokine production and kas-mediated cell activation. In: *Annals of the New York Academy of Sciences*; Jun; 1051; 2005. p.510-520. DOI: 10.1196/annals.1303.19. 16- Imer L, Madlener S, Horvath Z, Saiko P, Losert A, Herbauer, Grusch M, Krupitza G, Jaeger W, Hidvegi M, Madlener S, Szekeress T, Aveamar, a nontoxic fermented wheat germ extract, induces apoptosis and inhibits ribonucleotide reductase in human HL-60 promyelocytic leukemia cells. In: *Cancer Letters*; Jun 8; 250 (2); 2007. p.323-328. DOI: 10.1016/j.canlet.2006.10.018. 13- Bólint G, Apáthy A, Gádi M, Teles A, Resetar A, Blassó G, Falgay O, Szende B, Paksy A, Ehrenfeld M, Shoenfeld Y, Hidvegi M. Effect of Aveamar - a fermented wheat germ extract - on rheumatoid arthritis. Preliminary data. In: *Clinical and experimental rheumatology*; May - Jun; 24 (3); 2006. p.325-328. 14- Boros LG, Nichelatti M, Shoenfeld Y. Fermented wheat germ extract (Aveamar) in the treatment of cancer and autoimmune diseases. In: *Annals of the New York Academy of Sciences*; Jun; 1051; 2005. p.529-542. DOI: 10.1196/annals.1303.19. 15- Teles A, Kiss-Ióti L, Nagy I, Gwamstrem EL, Kuszt, Poigai J, Resetar A, Lowerik, Synergistic effect of aveamar on proinflammatory cytokine production and kas-mediated cell activation. In: *Annals of the New York Academy of Sciences*; Jun; 1051; 2005. p.510-520. DOI: 10.1196/annals.1303.19. 16- Imer L, Madlener S, Horvath Z, Saiko P, Losert A, Herbauer, Grusch M, Krupitza G, Jaeger W, Hidvegi M, Madlener S, Szekeress T, Aveamar, a nontoxic fermented wheat germ extract, induces apoptosis and inhibits ribonucleotide reductase in human HL-60 promyelocytic leukemia cells. In: *Cancer Letters*; Jun 8; 250 (2); 2007. p.323-328. DOI: 10.1016/j.canlet.2006.10.018. 13- Bólint G, Apáthy A, Gádi M, Teles A, Resetar A, Blassó G, Falgay O, Szende B, Paksy A, Ehrenfeld M, Shoenfeld Y, Hidvegi M. Effect of Aveamar - a fermented wheat germ extract - on rheumatoid arthritis. Preliminary data. In: *Clinical and experimental rheumatology*; May - Jun; 24 (3); 2006. p.325-328. 14- Boros LG, Nichelatti M, Shoenfeld Y. Fermented wheat germ extract (Aveamar) in the treatment of cancer and autoimmune diseases. In: *Annals of the New York Academy of Sciences*; Jun; 1051; 2005. p.529-542. DOI: 10.1196/annals.1303.19. 15- Teles A, Kiss-Ióti L, Nagy I, Gwamstrem EL, Kuszt, Poigai J, Resetar A, Lowerik, Synergistic effect of aveamar on proinflammatory cytokine production and kas-mediated cell activation. In: *Annals of the New York Academy of Sciences*; Jun; 1051; 2005. p.510-520. DOI: 10.1196/annals.1303.19. 16- Imer L, Madlener S, Horvath Z, Saiko P, Losert A, Herbauer, Grusch M, Krupitza G, Jaeger W, Hidvegi M, Madlener S, Szekeress T, Aveamar, a nontoxic fermented wheat germ extract, induces apoptosis and inhibits ribonucleotide reductase in human HL-60 promyelocytic leukemia cells. In: *Cancer Letters*; Jun 8; 250 (2); 2007. p.323-328. DOI: 10.1016/j.canlet.2006.10.018. 13- Bólint G, Apáthy A, Gádi M, Teles A, Resetar A, Blassó G, Falgay O, Szende B, Paksy A, Ehrenfeld M, Shoenfeld Y, Hidvegi M. Effect of Aveamar - a fermented wheat germ extract - on rheumatoid arthritis. Preliminary data. In: *Clinical and experimental rheumatology*; May - Jun; 24 (3); 2006. p.325-328. 14- Boros LG, Nichelatti M, Shoenfeld Y. Fermented wheat germ extract (Aveamar) in the treatment of cancer and autoimmune diseases. In: *Annals of the New York Academy of Sciences*; Jun; 1051; 2005. p.529-542. DOI: 10.1196/annals.1303.19. 15- Teles A, Kiss-Ióti L, Nagy I, Gwamstrem EL, Kuszt, Poigai J, Resetar A, Lowerik, Synergistic effect of aveamar on proinflammatory cytokine production and kas-mediated cell activation. In: *Annals of the New York Academy of Sciences*; Jun; 1051; 2005. p.510-520. DOI: 10.1196/annals.1303.19. 16- Imer L, Madlener S, Horvath Z, Saiko P, Losert A, Herbauer, Grusch M, Krupitza G, Jaeger W, Hidvegi M, Madlener S, Szekeress T, Aveamar, a nontoxic fermented wheat germ extract, induces apoptosis and inhibits ribonucleotide reductase in human HL-60 promyelocytic leukemia cells. In: *Cancer Letters*; Jun 8; 250 (2); 2007. p.323-328. DOI: 10.1016/j.canlet.2006.10.018. 13- Bólint G, Apáthy A, Gádi M, Teles A, Resetar A, Blassó G, Falgay O, Szende B, Paksy A, Ehrenfeld M, Shoenfeld Y, Hidvegi M. Effect of Aveamar - a fermented wheat germ extract - on rheumatoid arthritis. Preliminary data. In: *Clinical and experimental rheumatology*; May - Jun; 24 (3); 2006. p.325-328. 14- Boros LG, Nichelatti M, Shoenfeld Y. Fermented wheat germ extract (Aveamar) in the treatment of cancer and autoimmune diseases. In: *Annals of the New York Academy of Sciences*; Jun; 1051; 2005. p.529-542. DOI: 10.1196/annals.1303.19. 15- Teles A, Kiss-Ióti L, Nagy I, Gwamstrem EL, Kuszt, Poigai J, Resetar A, Lowerik, Synergistic effect of aveamar on proinflammatory cytokine production and kas-mediated cell activation. In: *Annals of the New York Academy of Sciences*; Jun; 1051; 2005. p.510-520. DOI: 10.1196/annals.1303.19. 16- Imer L, Madlener S, Horvath Z, Saiko P, Losert A, Herbauer, Grusch M, Krupitza G, Jaeger W, Hidvegi M, Madlener S, Szekeress T, Aveamar, a nontoxic fermented wheat germ extract, induces apoptosis and inhibits ribonucleotide reductase in human HL-60 promyelocytic leukemia cells. In: *Cancer Letters*; Jun 8; 250 (2); 2007. p.323-328. DOI: 10.1016/j.canlet.2006.10.018. 13- Bólint G, Apáthy A, Gádi M, Teles A, Resetar A, Blassó G, Falgay O, Szende B, Paksy A, Ehrenfeld M, Shoenfeld Y, Hidvegi M. Effect of Aveamar - a fermented wheat germ extract - on rheumatoid arthritis. Preliminary data. In: *Clinical and experimental rheumatology*; May - Jun; 24 (3); 2006. p.325-328. 14- Boros LG, Nichelatti M, Shoenfeld Y. Fermented wheat germ extract (Aveamar) in the treatment of cancer and autoimmune diseases. In: *Annals of the New York Academy of Sciences*; Jun; 1051; 2005. p.529-542. DOI: 10.1196/annals.1303.19. 15- Teles A, Kiss-Ióti L, Nagy I, Gwamstrem EL, Kuszt, Poigai J, Resetar A, Lowerik, Synergistic effect of aveamar on proinflammatory cytokine production and kas-mediated cell activation. In: *Annals of the New York Academy of Sciences*; Jun; 1051; 2005. p.510-520. DOI: 10.1196/annals.1303.19. 16- Imer L, Madlener S, Horvath Z, Saiko P, Losert A, Herbauer, Grusch M, Krupitza G, Jaeger W, Hidvegi M, Madlener S, Szekeress T, Aveamar, a nontoxic fermented wheat germ extract, induces apoptosis and inhibits ribonucleotide reductase in human HL-60 promyelocytic leukemia cells. In: *Cancer Letters*; Jun 8; 250 (2); 2007. p.323-328. DOI: 10.1016/j.canlet.2006.10.018. 13- Bólint G, Apáthy A, Gádi M, Teles A, Resetar A, Blassó G, Falgay O, Szende B, Paksy A, Ehrenfeld M, Shoenfeld Y, Hidvegi M. Effect of Aveamar - a fermented wheat germ extract - on rheumatoid arthritis. Preliminary data. In: *Clinical and experimental rheumatology*; May - Jun; 24 (3); 2006. p.325-328. 14- Boros LG, Nichelatti M, Shoenfeld Y. Fermented wheat germ extract (Aveamar) in the treatment of cancer and autoimmune diseases. In: *Annals of the New York Academy of Sciences*; Jun; 1051; 2005. p.529-542. DOI: 10.1196/annals.1303.19. 15- Teles A, Kiss-Ióti L, Nagy I, Gwamstrem EL, Kuszt, Poigai J, Resetar A, Lowerik, Synergistic effect of aveamar on proinflammatory cytokine production and kas-mediated cell activation. In: *Annals of the New York Academy of Sciences*; Jun; 1051; 2005. p.510-520. DOI: 10.1196/annals.1303.19. 16- Imer L, Madlener S, Horvath Z, Saiko P, Losert A, Herbauer, Grusch M, Krupitza G, Jaeger W, Hidvegi M, Madlener S, Szekeress T, Aveamar, a nontoxic fermented wheat germ extract, induces apoptosis and inhibits ribonucleotide reductase in human HL-60 promyelocytic leukemia cells. In: *Cancer Letters*; Jun 8; 250 (2); 2007. p.323-328. DOI: 10.1016/j.canlet.2006.10.018. 13- Bólint G, Apáthy A, Gádi M, Teles A, Resetar A, Blassó G, Falgay O, Szende B, Paksy A, Ehrenfeld M, Shoenfeld Y, Hidvegi M. Effect of Aveamar - a fermented wheat germ extract - on rheumatoid arthritis. Preliminary data. In: *Clinical and experimental rheumatology*; May - Jun; 24 (3); 2006. p.325-328. 14- Boros LG, Nichelatti M, Shoenfeld Y. Fermented wheat germ extract (Aveamar) in the treatment of cancer and autoimmune diseases. In: *Annals of the New York Academy of Sciences*; Jun; 1051; 2005. p.529-542. DOI: 10.1196/annals.1303.19. 15- Teles A, Kiss-Ióti L, Nagy I, Gwamstrem EL, Kuszt, Poigai J, Resetar A, Lowerik, Synergistic effect of aveamar on proinflammatory cytokine production and kas-mediated cell activation. In: *Annals of the New York Academy of Sciences*; Jun; 1051; 2005. p.510-520. DOI: 10.1196/annals.1303.19. 16- Imer L, Madlener S, Horvath Z, Saiko P, Losert A, Herbauer, Grusch M, Krupitza G, Jaeger W, Hidvegi M, Madlener S, Szekeress T, Aveamar, a nontoxic fermented wheat germ extract, induces apoptosis and inhibits ribonucleotide reductase in human HL-60 promyelocytic leukemia cells. In: *Cancer Letters*; Jun 8; 250 (2); 2007. p.323-328. DOI: 10.1016/j.canlet.2006.10.018. 13- Bólint G, Apáthy A, Gádi M, Teles A, Resetar A, Blassó G, Falgay O, Szende B, Paksy A, Ehrenfeld M, Shoenfeld Y, Hidvegi M. Effect of Aveamar - a fermented wheat germ extract - on rheumatoid arthritis. Preliminary data. In: *Clinical and experimental rheumatology*; May - Jun; 24 (3); 2006. p.325-328. 14- Boros LG, Nichelatti M, Shoenfeld Y. Fermented wheat germ extract (Aveamar) in the treatment of cancer and autoimmune diseases. In: *Annals of the New York Academy of Sciences*; Jun; 1051; 2005. p.529-542. DOI: 10.1196/annals.1303.19. 15- Teles A, Kiss-Ióti L, Nagy I, Gwamstrem EL, Kuszt, Poigai J, Resetar A, Lowerik, Synergistic effect of aveamar on proinflammatory cytokine production and kas-mediated cell activation. In: *Annals of the New York Academy of Sciences*; Jun; 1051; 2005. p.510-520. DOI: 10.1196/annals.1303.19. 16- Imer L, Madlener S, Horvath Z, Saiko P, Losert A, Herbauer, Grusch M, Krupitza G, Jaeger W, Hidvegi M, Madlener S, Szekeress T, Aveamar, a nontoxic fermented wheat germ extract, induces apoptosis and inhibits ribonucleotide reductase in human HL-60 promyelocytic leukemia cells. In: *Cancer Letters*; Jun 8; 250 (2); 2007. p.323-328. DOI: 10.1016/j.canlet.2006.10.018. 13- Bólint G, Apáthy A, Gá